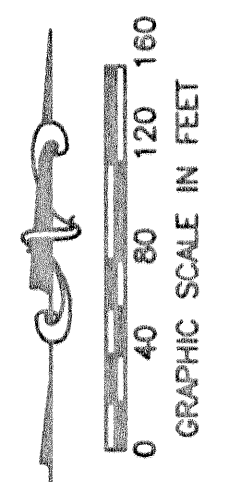
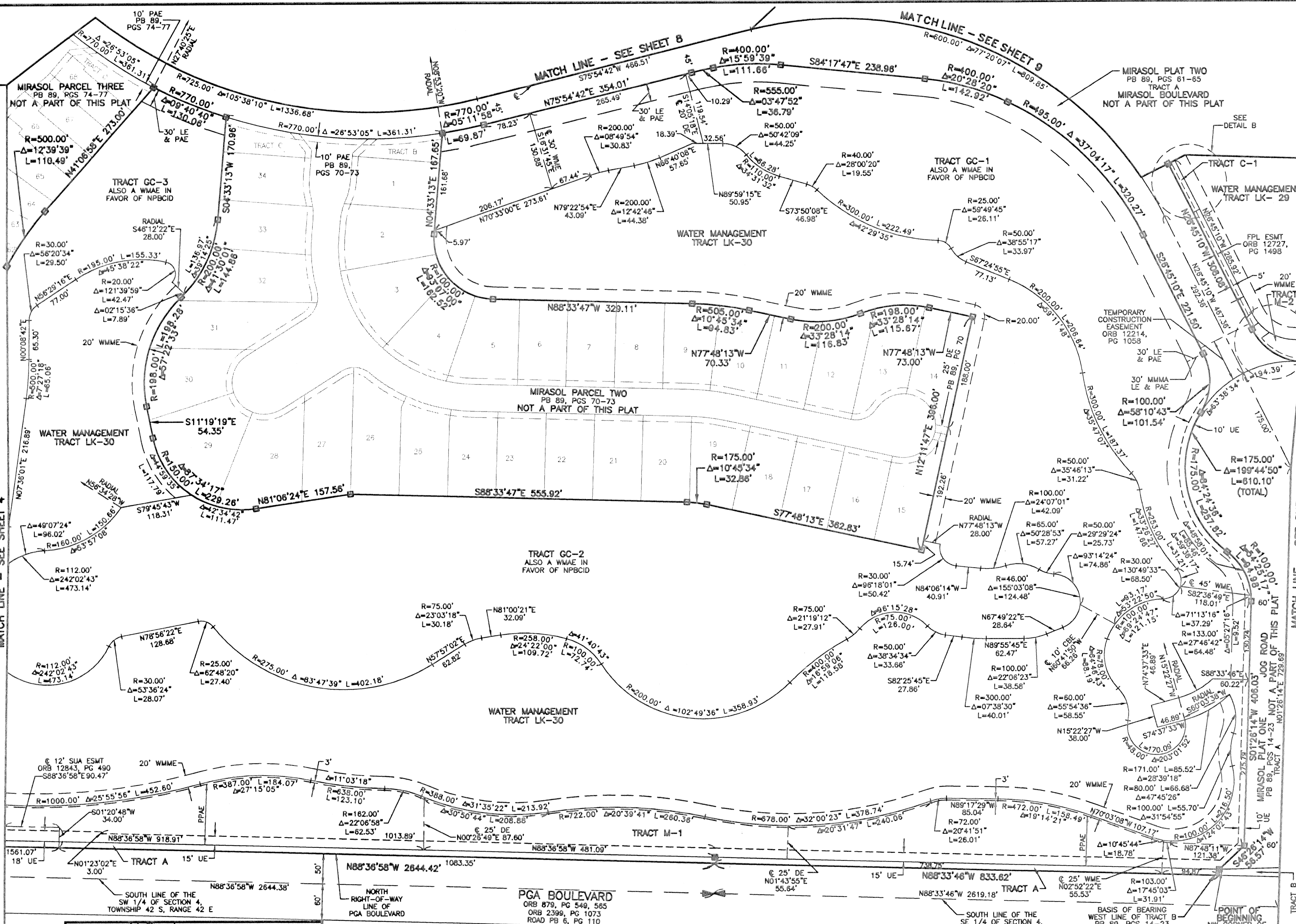
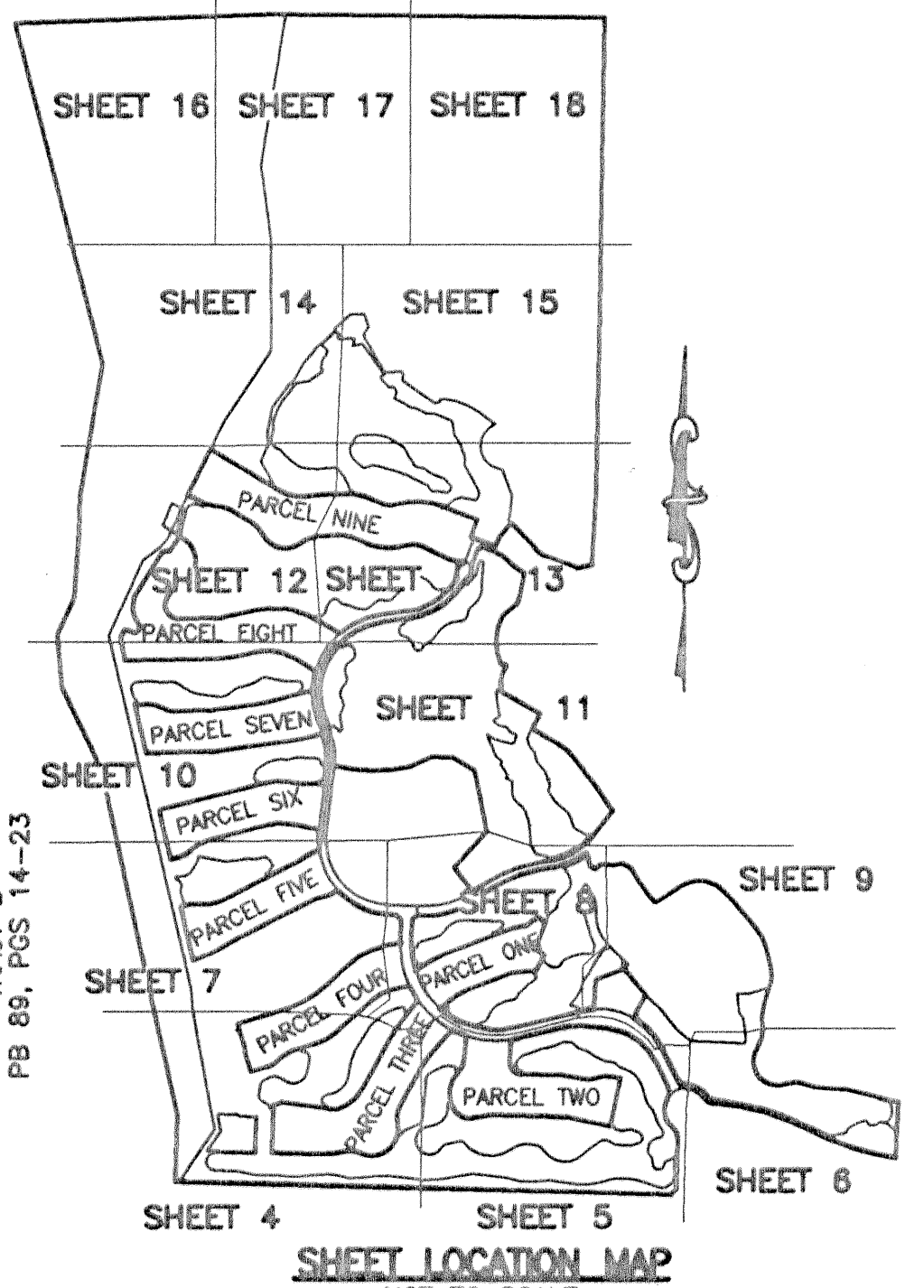


STATE OF FLORIDA
COUNTY OF PALM BEACH
THIS PLAT WAS FILED FOR
RECORD _____ DAY OF _____
AD, 2003 AND DULY RECORDED
IN PLAT BOOK _____ ON PAGES
_____ THROUGH _____
DOROTHY H. WILKEN, CLERK
BY: _____, D.C.



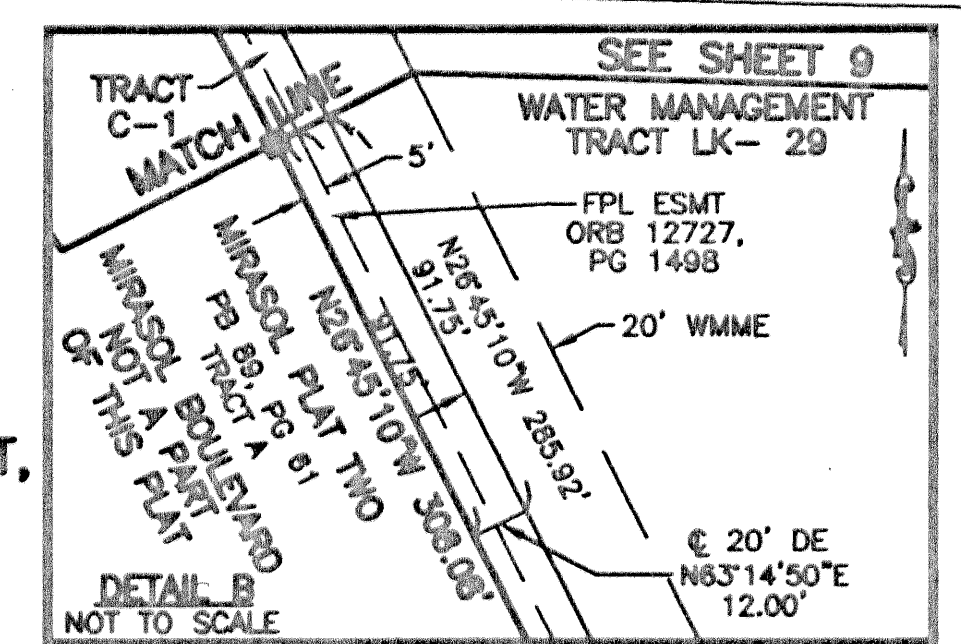
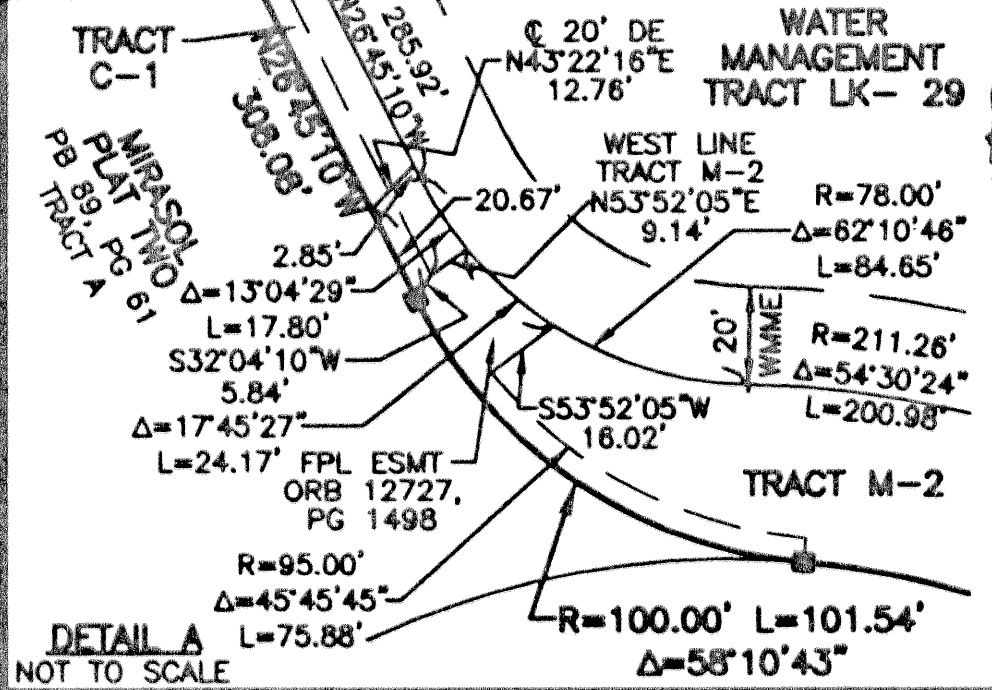
LEGEND

AE	ACCESS EASEMENT
Δ	CENTRAL (DELTA) ANGLE
CBE	CURT BRIDGE EASEMENT
CH	CHORD
DE	DRAINAGE EASEMENT
E	EASEMENT
ESMT	INGRESS/EGRESS EASEMENT
FPL	FLORIDA POWER AND LIGHT
L	ARC LENGTH
LE	LANDSCAPE EASEMENT
MMMA	MIRASOL MASTER MAINTENANCE ASSOCIATION
NPBCID	NORTHERN PALM BEACH COUNTY IMPROVEMENT DISTRICT
ORB	OFFICIAL RECORD BOOK
PPAE	PUBLIC PEDESTRIAN ACCESS EASEMENT
PAE	PEDESTRIAN ACCESS EASEMENT
PB	PLAT BOOK
PCD	PLANNED COMMUNITY DEVELOPMENT
PG(S)	PAGE(S)
PME	PRESERVE MAINTENANCE EASEMENT
R	RADIUS
SLE	SEWER LINE EASEMENT
SUA	SEACOAST UTILITY AUTHORITY
WE	WATER LINE EASEMENT
WMAE	WATER MANAGEMENT ACCESS EASEMENT
WME	WATER MANAGEMENT EASEMENT
WMME	WATER MANAGEMENT MAINTENANCE EASEMENT
⊙	CENTERLINE
⊠	PERMANENT REFERENCE MONUMENT SET LB-048 (4"x4" CONCRETE)
⊡	PERMANENT REFERENCE MONUMENT FOUND LB-048 (4"x4" CONCRETE) UNLESS OTHERWISE NOTED
⊞	WITNESS MONUMENT SET LB-048 (4"x4" CONCRETE)



MIRASOL PLAT FIVE

PART OF GOLF DIGEST P.C.D.
BEING IN SECTIONS 32 AND 33, TOWNSHIP 41 SOUTH, RANGE 42 EAST,
AND SECTIONS 04 AND 05, TOWNSHIP 42 SOUTH, RANGE 42 EAST,
CITY OF PALM BEACH GARDENS, PALM BEACH COUNTY, FLORIDA
SHEET 5 OF 19



THIS INSTRUMENT WAS PREPARED BY MARY HANNA CLODFELTER, P.S.M. IN THE OFFICES OF MOCK, ROOS & ASSOCIATES, INC., 5720 CORPORATE WAY, WEST PALM BEACH, FLORIDA 33407.

SCALE:	1" = 80'
P.A. NO.:	99387.00
DATE:	MAY, 2002
DRAWING NO.:	41-42-32-59

FLORIDA L.B. NO. 48

MOCK ROOS
ENGINEERS PLANNERS

5720 Corporate Way, West Palm Beach, Florida 33407
(561) 653-3113, fax 478-7248

MIRASOL PLAT FIVE
PART OF GOLF DIGEST P.C.D.
BEING IN SECTIONS 32 AND 33,
TOWNSHIP 41 SOUTH, RANGE 42 EAST,
AND IN SECTIONS 04 AND 05,
TOWNSHIP 42 SOUTH, RANGE 42 EAST,
CITY OF PALM BEACH GARDENS,
PALM BEACH COUNTY, FLORIDA

REV.: 12-23-02
CAD FILE: TAYLGCPS\GCP5RPP2